

Award of Excellence

Corporate
R&M Creative Group

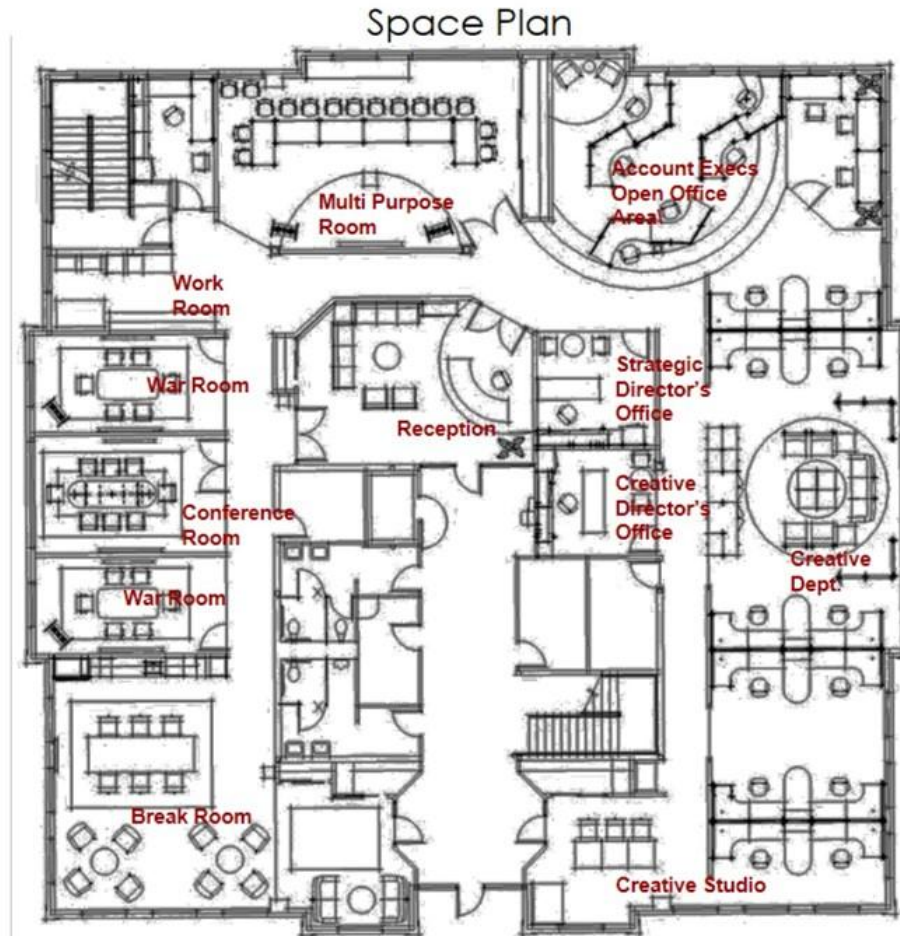
Valentina Maroni
Interior Design

Madison College

R&M Creative Group

Valentina Maroni

Madison College



Corporate

R&M Creative Group

Valentina Maroni

Madison College

Reception



NTS

NTS

- Advertising display wall for print ads
- Multi TV display behind reception desk for TV commercials and news
- Glass doors to Account Executives open office area on one side, to main conference room on the opposite side
- Classic Herman Miller collection furniture for timeless feel

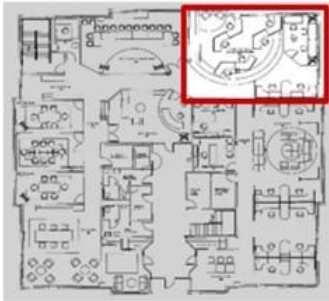
Corporate

R&M Creative Group

Valentina Maroni

Madison College

Open Office Area: Benching



NTS



NTS

- 120o Herman Miller 'Sense' benching system arranged end to end for communication & privacy
- Mobile pedestal files with cushion tops for additional seating
- Strategic director's glass fronted office looks out over open area
- Glass walled 'Quiet' room for use as needed by mobile workers. Jigsaw puzzle motif on glass

Corporate

R&M Creative Group

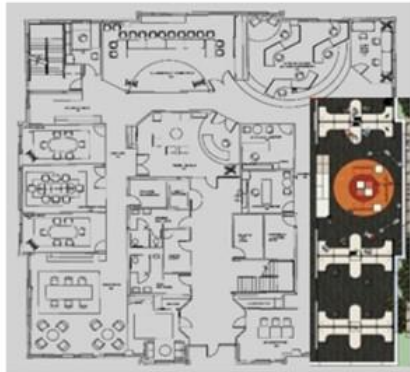
Valentina Maroni

Madison College

Creative Department



NTS



- Collaboration and creative exchange
- Open workstation concept with double workstations at right angles to windows for maximum natural light into interior spaces
- Glass fronted Creative Director's office opens to department
- TV for viewing commercials and for relaxation
- Carpet design suggests a 'bulls eye' in the creative center

Corporate

R&M Creative Group

Valentina Maroni

Madison College

Design Goals Met

- Vibrant interior design using a classic color scheme and furnishings to demonstrate R&M's creativity, underpinned with business understanding
- Functional, ergonomically designed work areas with access to natural light
- Creativity and teamwork fostered through space planning and furniture and design choices
- A combination of a comfortable work space in which employees can produce their best work, but relax and socialize as well



Corporate



1st Place

Corporate
Zonk Gaming Software Office

Victoria Johnson
Interior Architecture

University of Wisconsin Madison

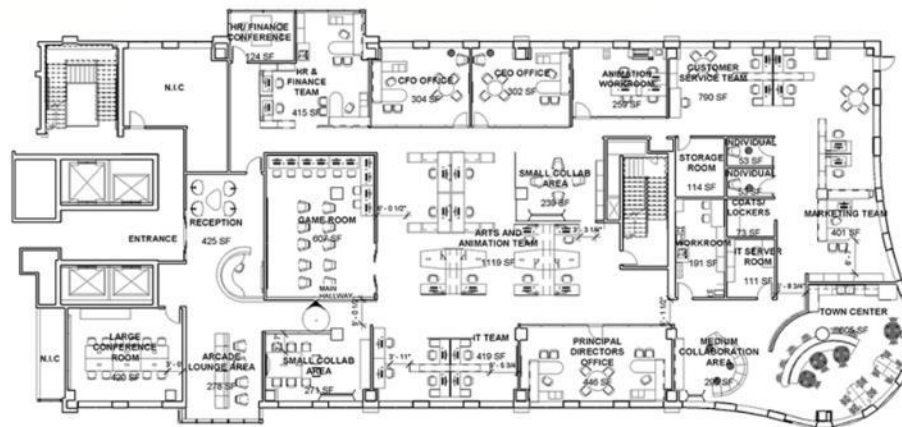
Zonk

Victoria Johnson

University of Wisconsin-Madison



FLOORPLAN
NOT TO SCALE



Corporate

Zonk
Victoria Johnson
University of Wisconsin-Madison



Corporate

Zonk
Victoria Johnson
University of Wisconsin-Madison



Corporate

Zonk
Victoria Johnson
University of Wisconsin-Madison



Corporate



Award of Excellence

Hospitality/Retail
Terra Restaurant and Bar

Julia Dane
Interior Architecture

University of Wisconsin-Madison

Terra Restaurant and Bar

Julia Dane

University of Wisconsin-Madison



Hospitality/Retail

Terra Restaurant and Bar

Julia Dane

University of Wisconsin-Madison



Hospitality/Retail

Terra Restaurant and Bar

Julia Dane

University of Wisconsin-Madison



Hospitality/Retail

Terra Restaurant and Bar

Julia Dane

University of Wisconsin-Madison



Hospitality/Retail



1st Place

Hospitality/Retail
RUST

Calamity Rutherford
Interior Architecture

University of Wisconsin-Madison

RUST

Calamity Rutherford

University of Wisconsin-Madison



INSPIRATION/SENSORY

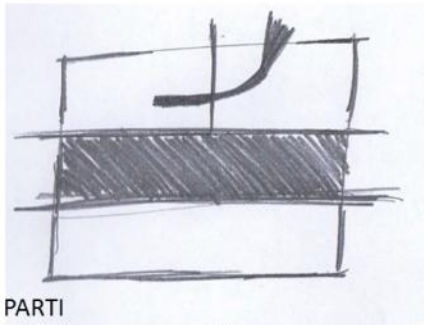
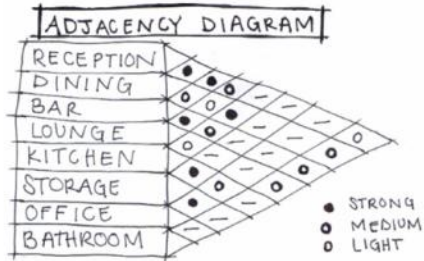
RESTAURANT MENU

Hospitality/Retail

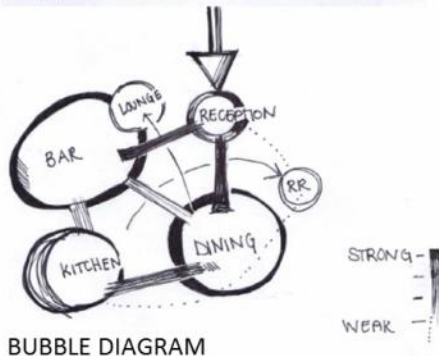
RUST

Calamity Rutherford

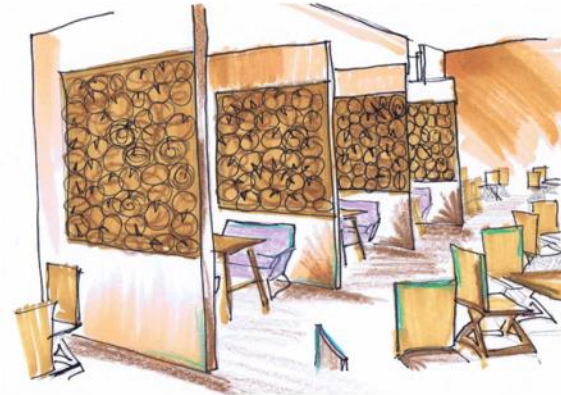
University of Wisconsin-Madison



PARTI



BUBBLE DIAGRAM



PERSPECTIVE OF DINING ROOM



PERSPECTIVE OF BAR

BEGINNING THE DESIGN PROCESS

Hospitality/Retail

RUST

Calamity Rutherford

University of Wisconsin-Madison



BAR

BAR AREA



RECEPTION/ENTRY



DINING ROOM

PERSPECTIVES

Hospitality/Retail

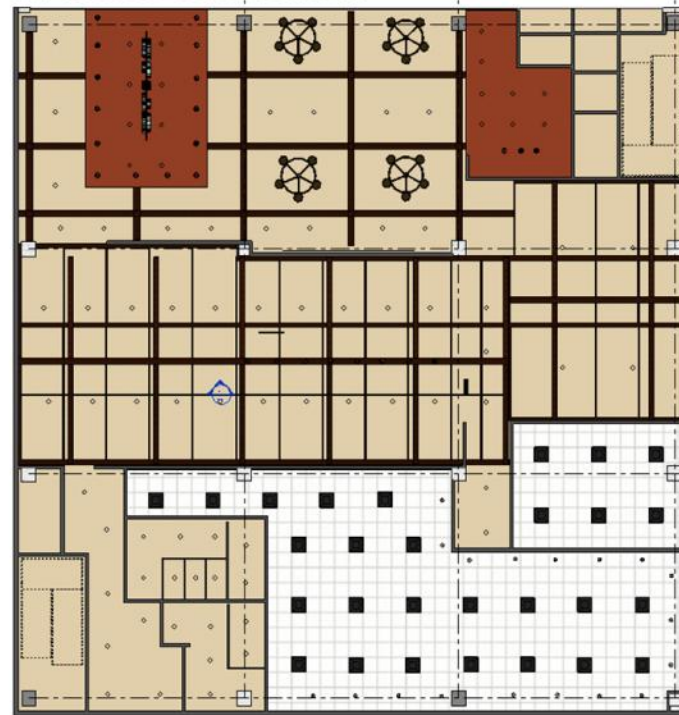
RUST

Calamity Rutherford

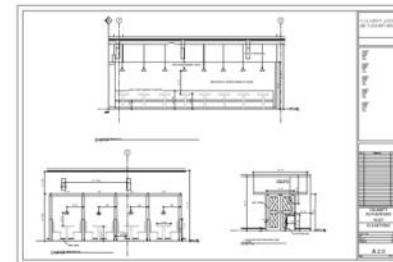
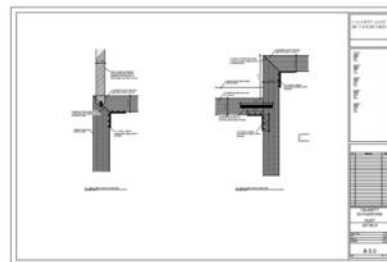
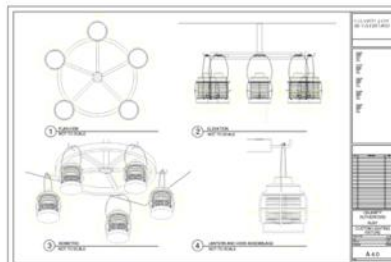
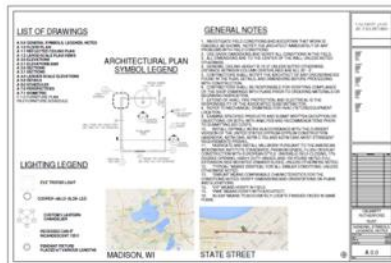
University of Wisconsin-Madison



REFLECTED CEILING PLAN



CONSTRUCTION DOCUMENTS



Hospitality/Retail



Award of Excellence

Residential
Natura Della Luce

Laura Schade
Interior Architecture

University of Wisconsin - Stevens Point

Natura Della Luce

Laura Schade

University of Wisconsin - Stevens Point

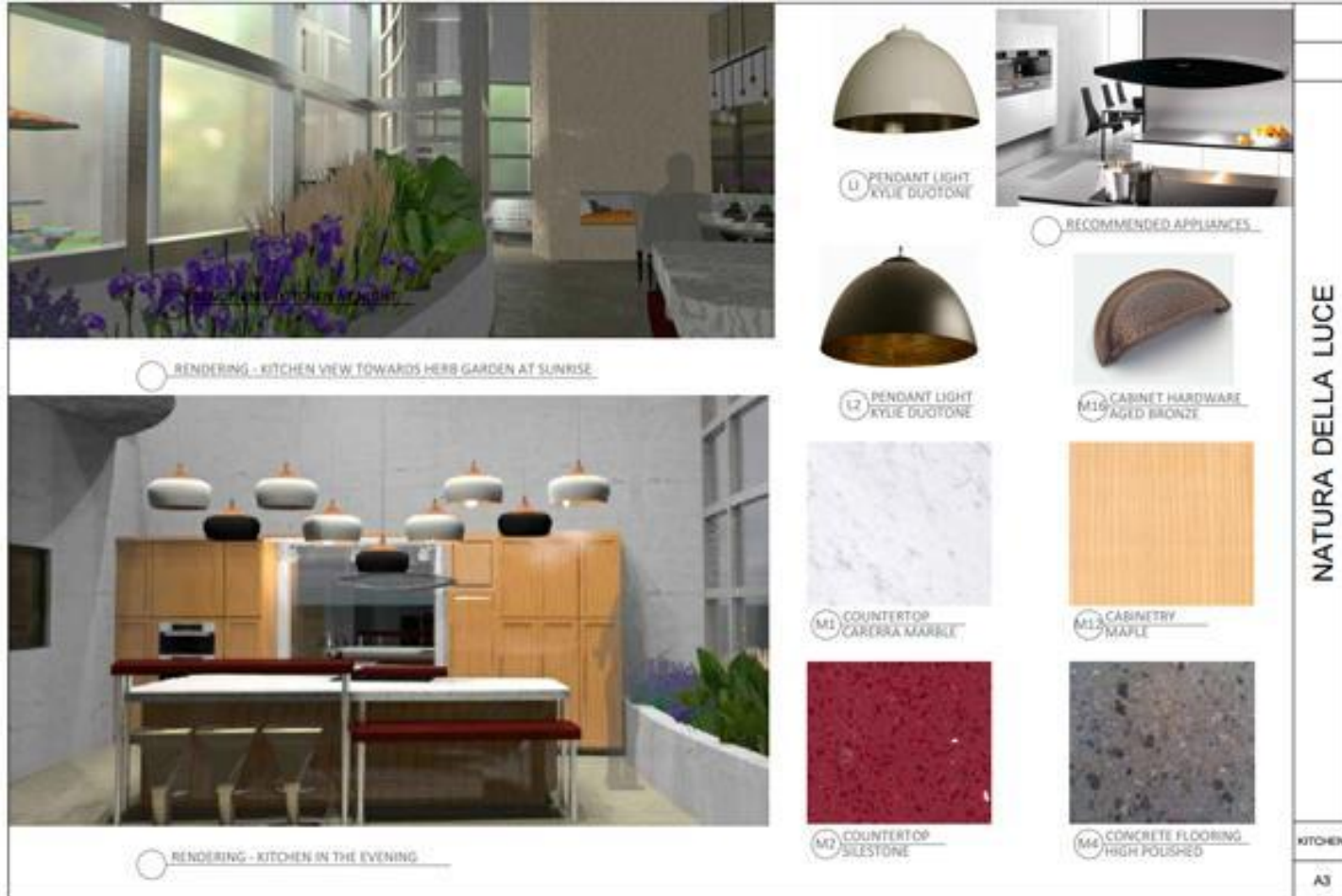


Residential

Natura Della Luce

Laura Schade

University of Wisconsin - Stevens Point

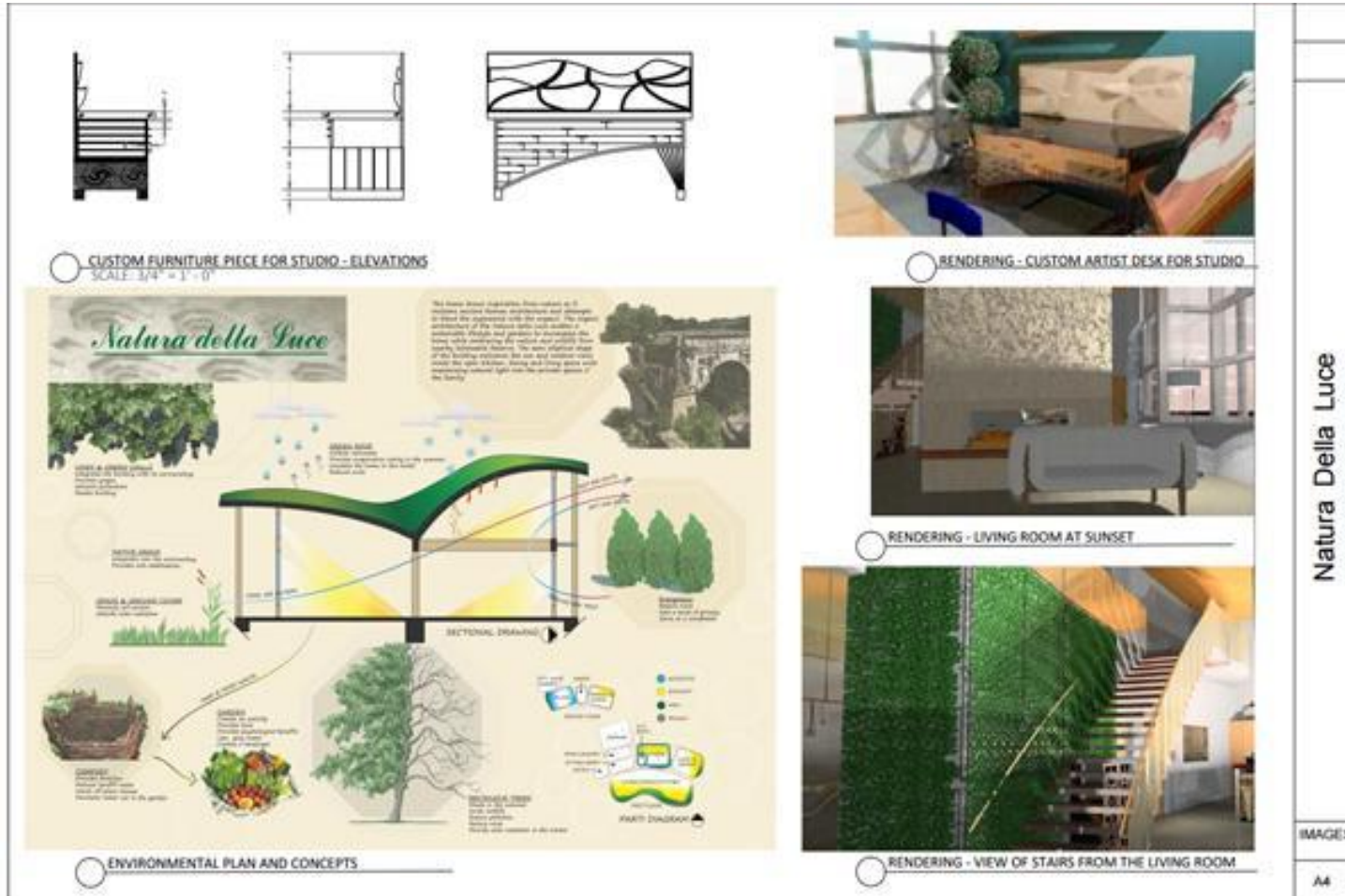


Residential

Natura Della Luce

Laura Schade

University of Wisconsin - Stevens Point

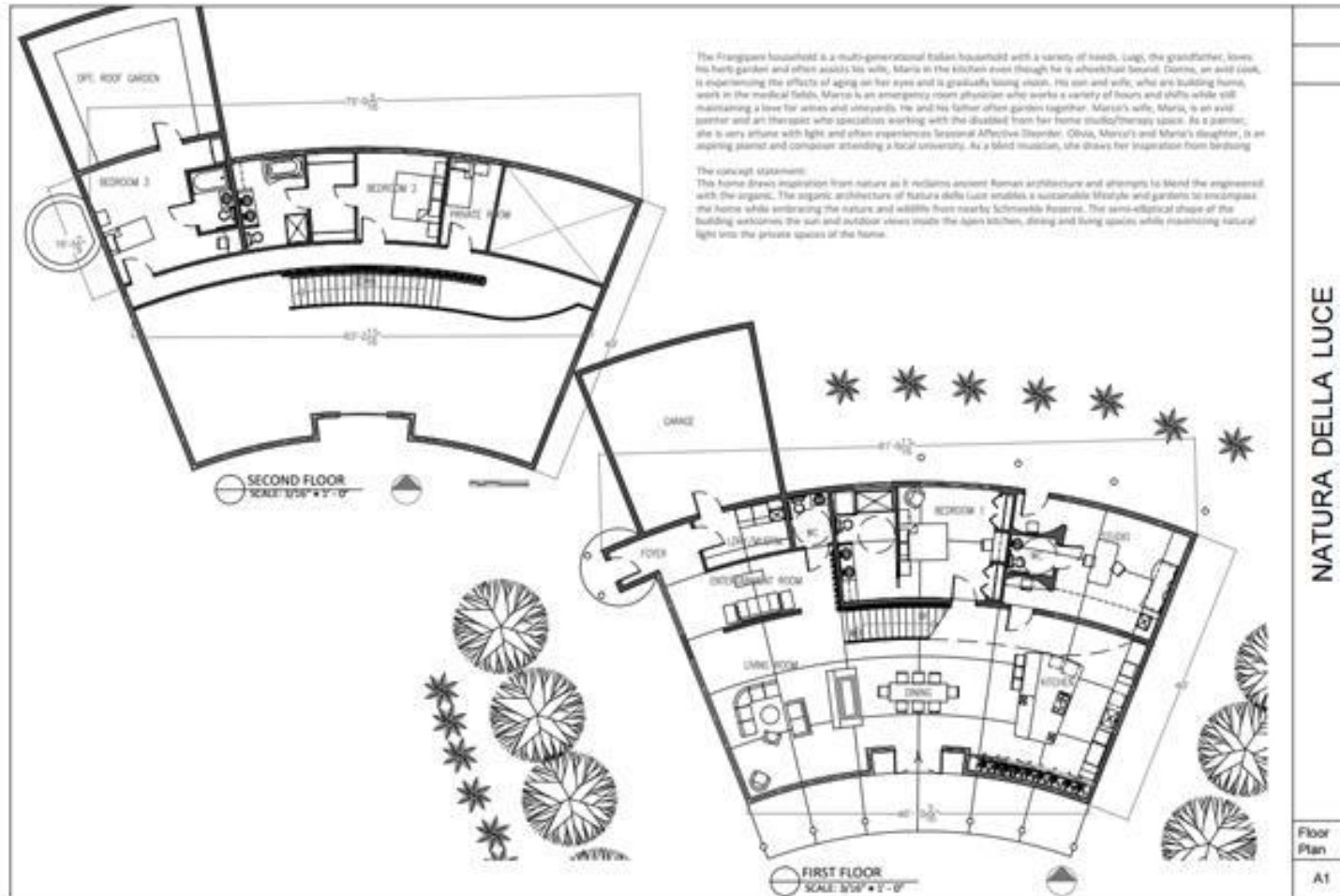


Residential

Natura Della Luce

Laura Schade

University of Wisconsin - Stevens Point



Residential



Best of Competition

Corporate
Zonk

Zachary Denton
Interior Architecture

University of Wisconsin - Madison

Zonk

Zachary Denton

University of Wisconsin-Madison



ZONK

10 East Doty Street
Madison WI 53703

MISSION STATEMENT:

At ZONK, our mission is to provide expertise, resources and solutions to global customers seeking cutting edge video gaming product design. We pride ourselves in our ability to nurture an environment that fosters artistic creativity and progressive technology in the world of gaming. As a team, we deliver groundbreaking innovative games that represent world class product development in the market of our clients.

CONCEPT STATEMENT:

ZONK will be the ultimate gaming company, that it will be the place that enhances collaboration and entertainment in one space. The simple and clean lines from materials like steel, glass, and wood will bring the sophistication needed for this urban style company. The overall design of the space will be high mannered and cultivated as the brand reflects.

Bubble Diagram:



Reception



Floor Plan Scale: 1/8" = 1'-0"

Corporate

Zonk

Zachary Denton

University of Wisconsin-Madison

Haworth Systems Furniture:



Coalesce Cappa Chair



CFO and CEO Desk



Programmer and Intern Benching



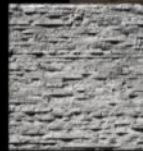
Haworth Ygg Task Chair



Gaming Room



Gaming Room Testing Lounge



Architectural Feature Walls



High Tower Prism



System Workstations Fabric



Lounge Furniture Fabric



Work Area Flooring



Corridor Flooring

Corporate

Zonk

Zachary Denton

University of Wisconsin-Madison

Lighting:



High Tower Juicy



High Tower Fisherman



High Tower Edison



High Tower Caravaggio



High Tower Drum



Architectural Feature Hallway



Armstrong Wood Works



Armstrong SoundScapes Shapes Circle



Armstrong SoundScapes Shapes Hexagon



Armstrong SoundScapes Shapes Concave/Concave



Armstrong SoundScapes Shapes Trapezoid



Reflective Ceiling Plan Scale: 1/8" = 1'-0"

Lighting Legend:

- High Tower Drum
- High Tower Caravaggio
- High Tower Fisherman
- High Tower Edison
- High Tower Juicy

Ceiling Legend:

- Armstrong SoundScapes Shapes Rectangle
- Armstrong SoundScapes Shapes Circle
- Armstrong SoundScapes Shapes Hexagon
- Armstrong SoundScapes Shapes Trapezoid
- Armstrong SoundScapes Shapes Convex/Concave
- Armstrong Wood Works

Corporate

Zonk

Zachary Denton

University of Wisconsin-Madison



The Hub



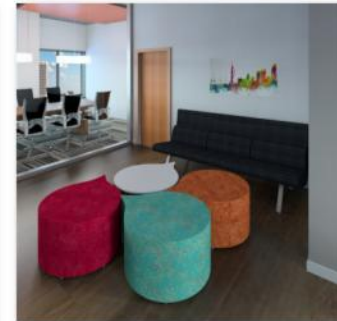
Private Work Booths



Collaboration



Production Studio



Waiting Area

Corporate

Zonk

Zachary Denton

University of Wisconsin-Madison



Corporate